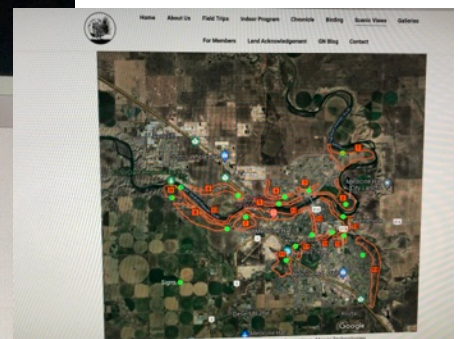
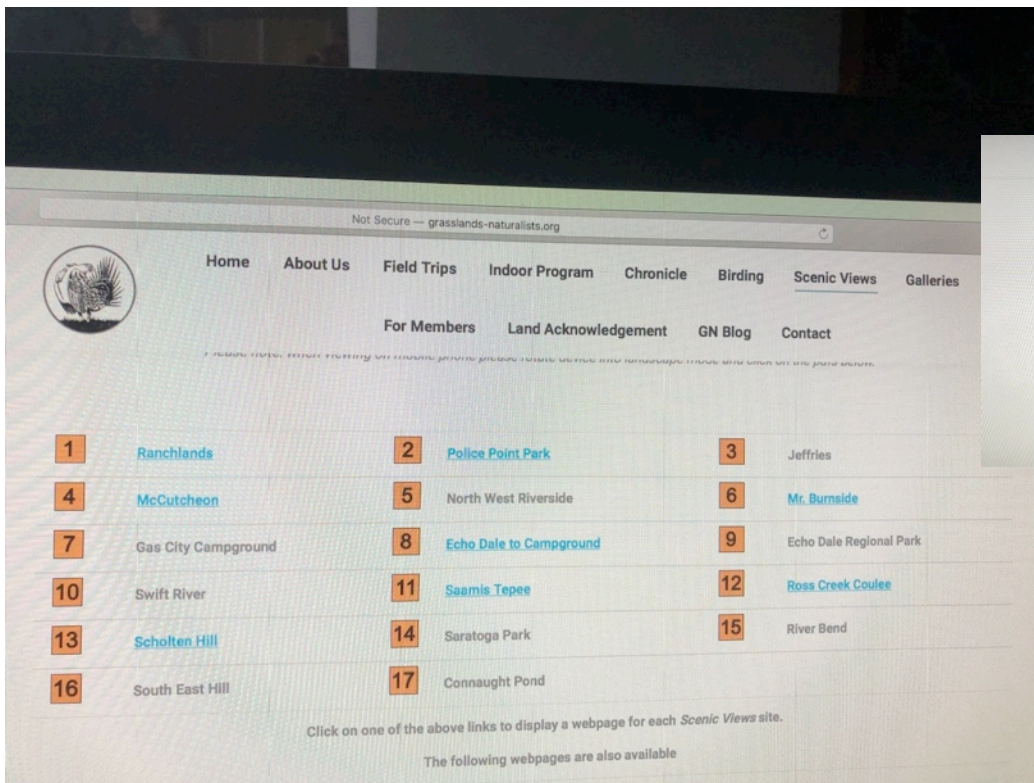
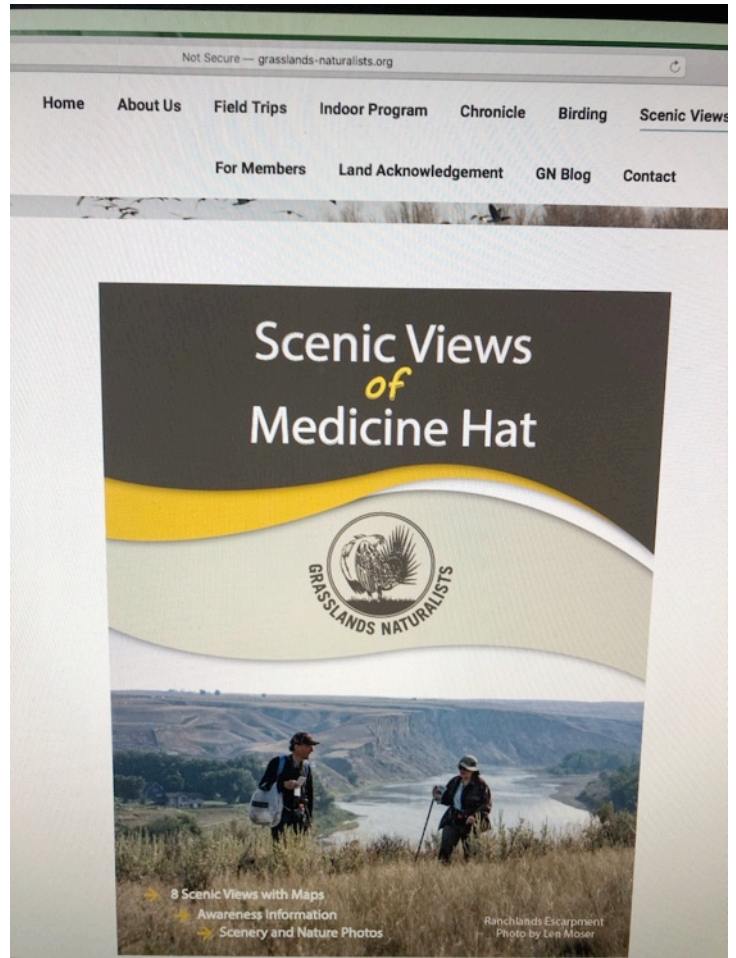
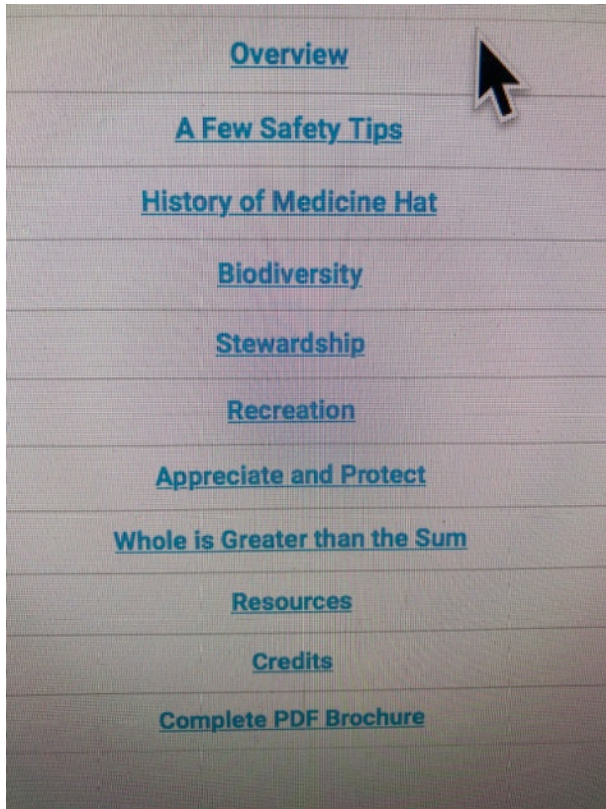


Scenic Views of Medicine Hat Society of Grasslands Naturalists Report for March 2023 AGM (Gerry Ehler and John Slater)

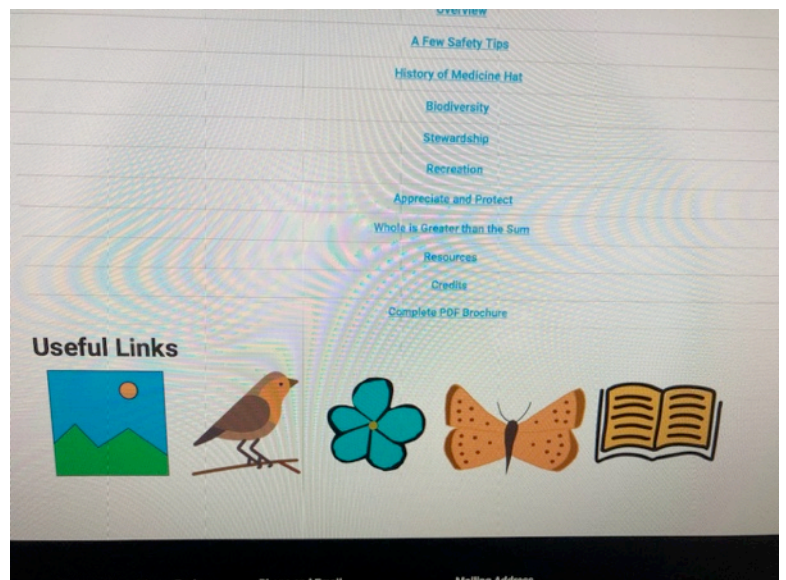
2022 was a busy year for our Scenic Views working group John Slater, Paul Thibault, Len Moser, David Gue, Phil Horch, Hugh Armstrong, and Gerry Ehler. In the spring we worked with Dirty Deeds to locate, orientate, and install 8 scenic view signs which were designed by FOX Canada. The Scenic Views website <http://grasslands-naturalists.org/scenic-views/> was activated complete with information, trail maps, points of interest and photos of the installed scenic view signs: Ranchlands, Police Point Park, McCutcheon, Mr. Burnside, Echo Dale to Campground, Saamis Tepee, Ross Creek Coulee, and Scholten Hill.





Awareness and education write-ups were completed and made available including information about our city’s history, biodiversity, stewardship, recreation, appreciate and protection, and resources. In addition, hotlinks were established to take the user to a variety of resources including: photo galleries (scenic views and subject matters such as biodiversity, stewardship, and recreation); and information about the animals, plants, and birds of Medicine Hat.

Due to the higher costs of signs, the project ran out of funds to complete the remaining 9 scenic view signs: Jeffries, NW Riverside, Gas City Campground, Echo Dale Regional Park, Swift River, Saratoga Park, River Bend, SE Hill, and Connaught Pond. In the fall, the city gave us some encouraging words, and on Feb. 14, 2023 the City confirmed they will cost share the making and installing of these 9 scenic view signs. Our working group will soon continue with our cost share volunteer work to finalize the Scenic Views of Medicine Hat project. This work will include: helping with the proof reading of the draft sign design, and with the location and orientation of the signs; completing the planned Indigenous History write-up, trail maps, points-of-interests, photo galleries; and activating the Scenic Views website for all 17 scenic view sites.



In 2022, the Scenic Views project required the expenditure of an estimated \$8500 (55% City of MH, and 45% Alberta Ecotrust). In addition, the GN’s scenic views working group contributed an estimated \$11,300 worth of professional and technical volunteer hours. In particular, volunteer work relating to computer and website work, photography, signage, and project management.